

2017년 11월 골영회 월례집담회



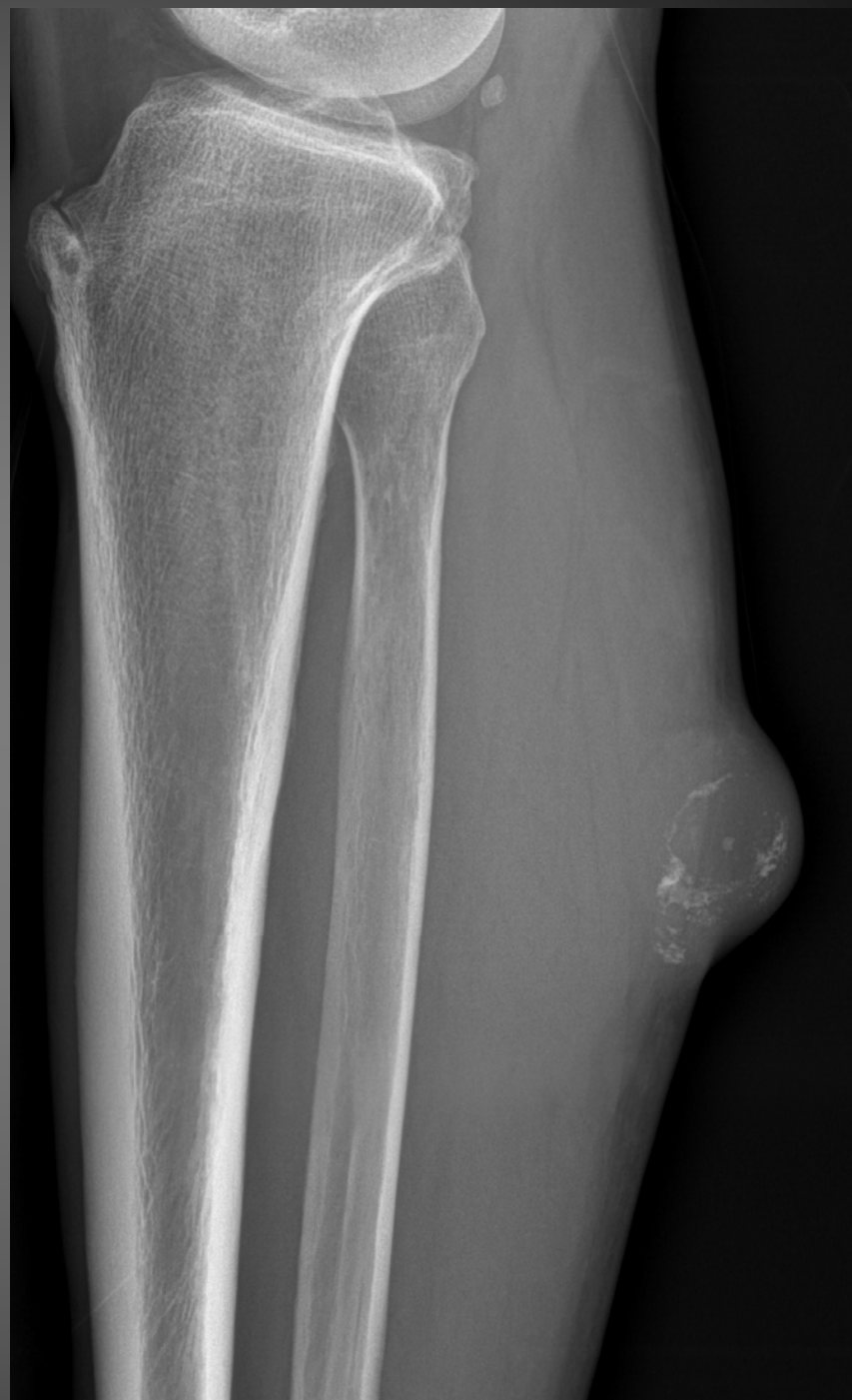
가톨릭관동대학교 국제성모병원

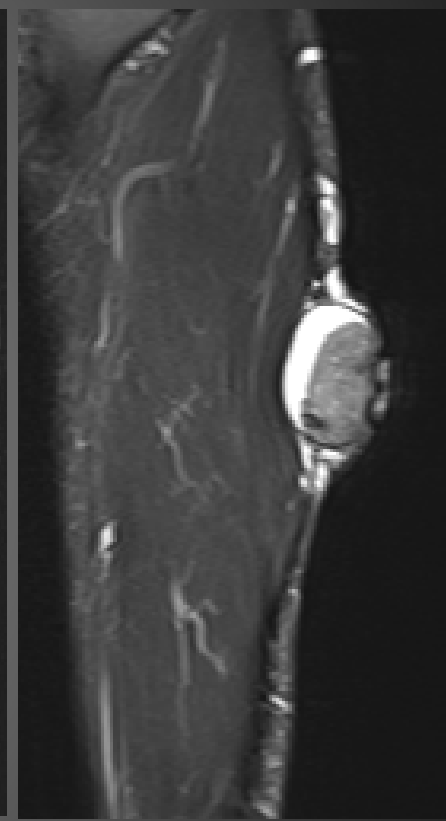
CATHOLIC KWANDONG UNIVERSITY INTERNATIONAL ST. MARY'S HOSPITAL

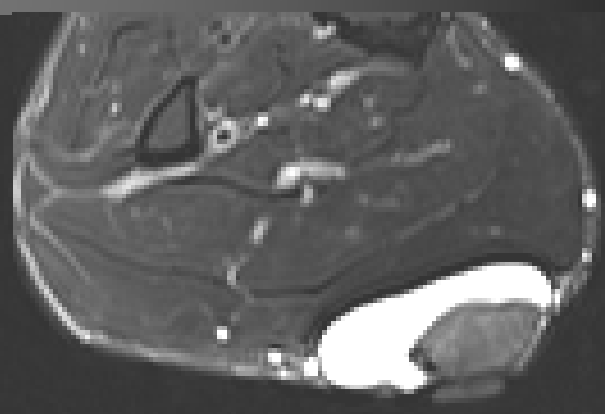
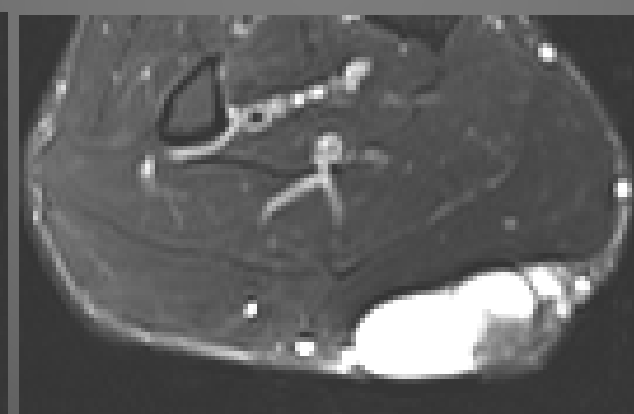
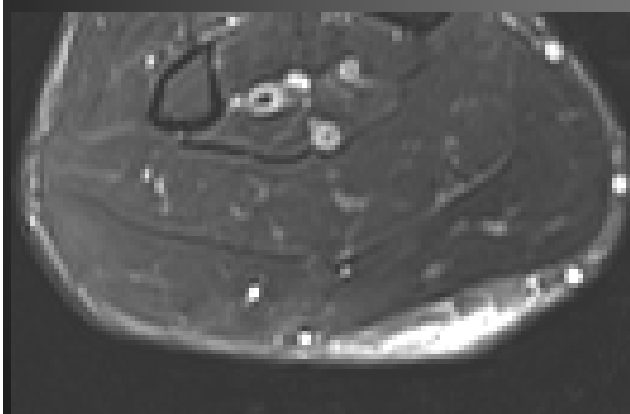
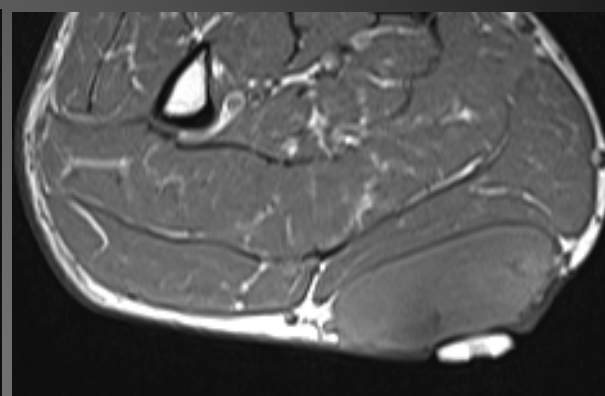
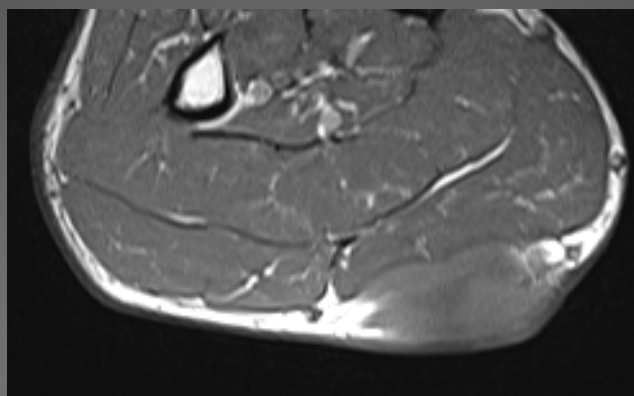
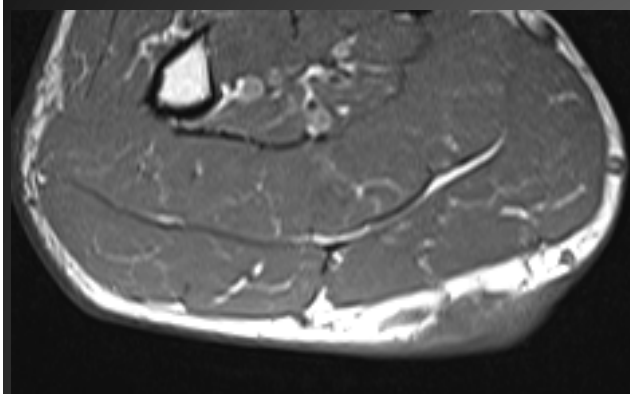
M/58

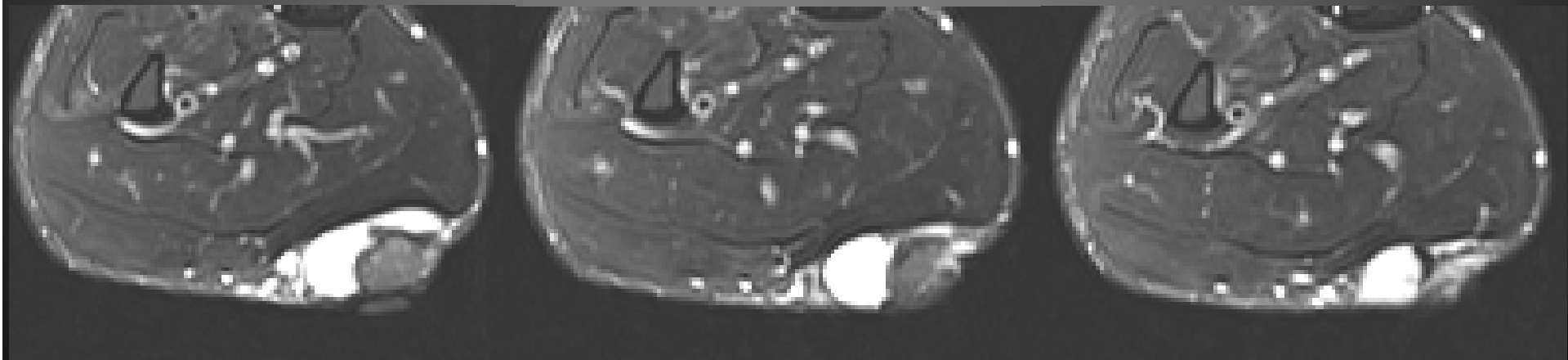
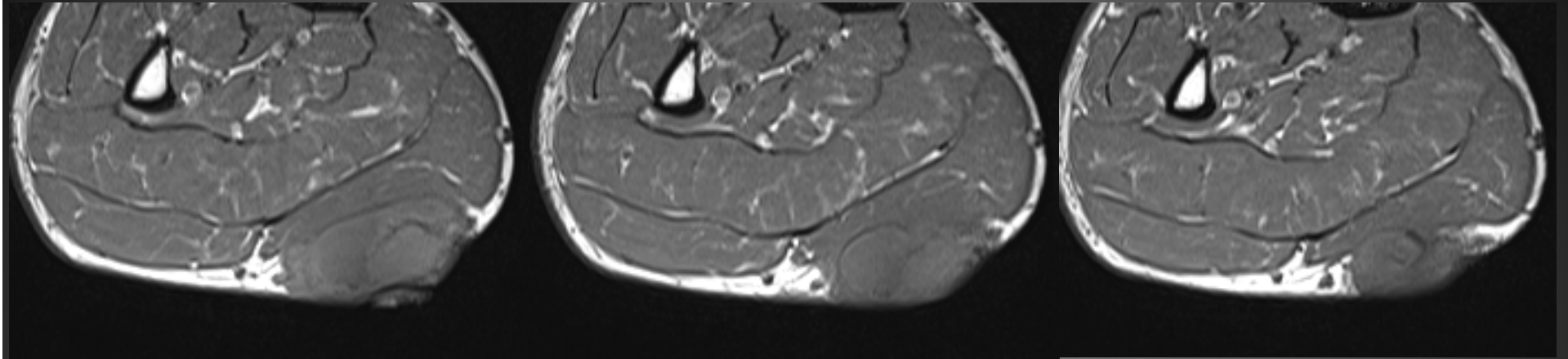
30년전 오른쪽 종아리 뒤에 여드름만한 것이
있었는데 점점 커지고 약간 아파서 내원

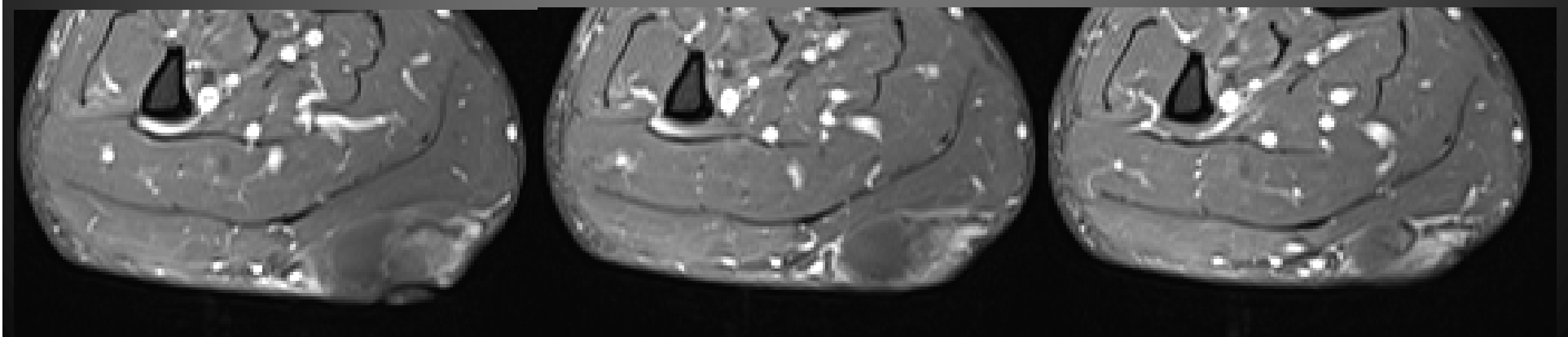
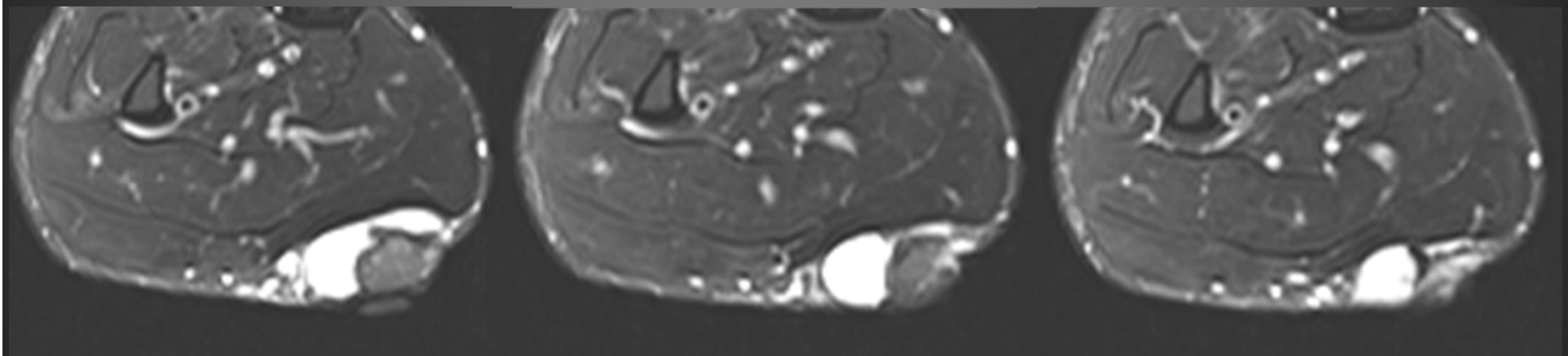
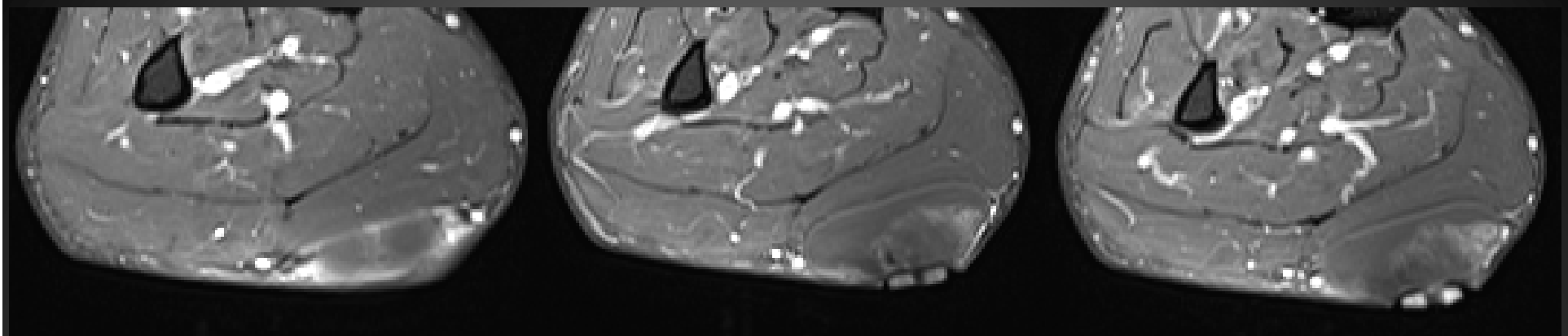


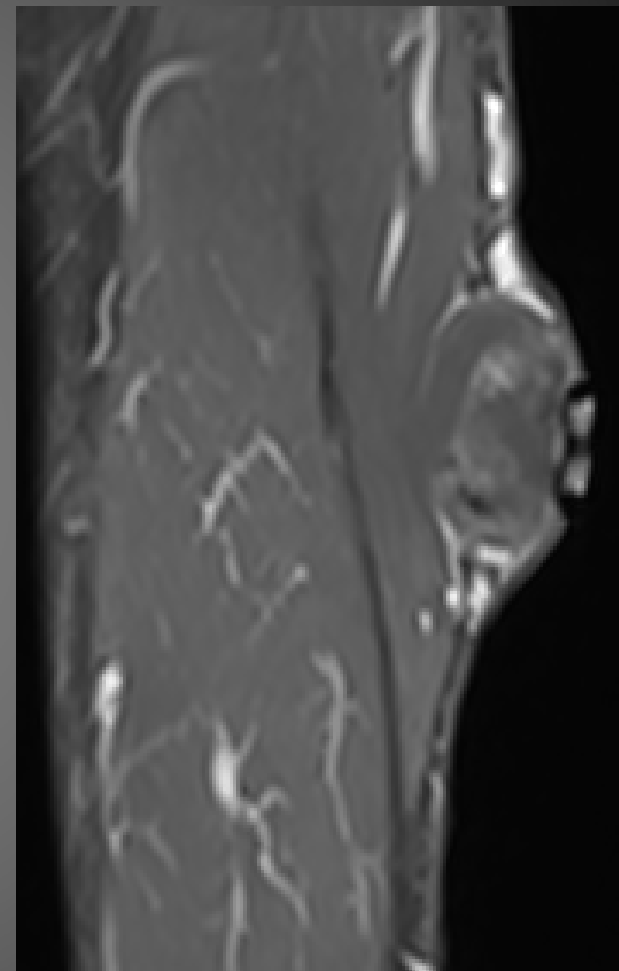
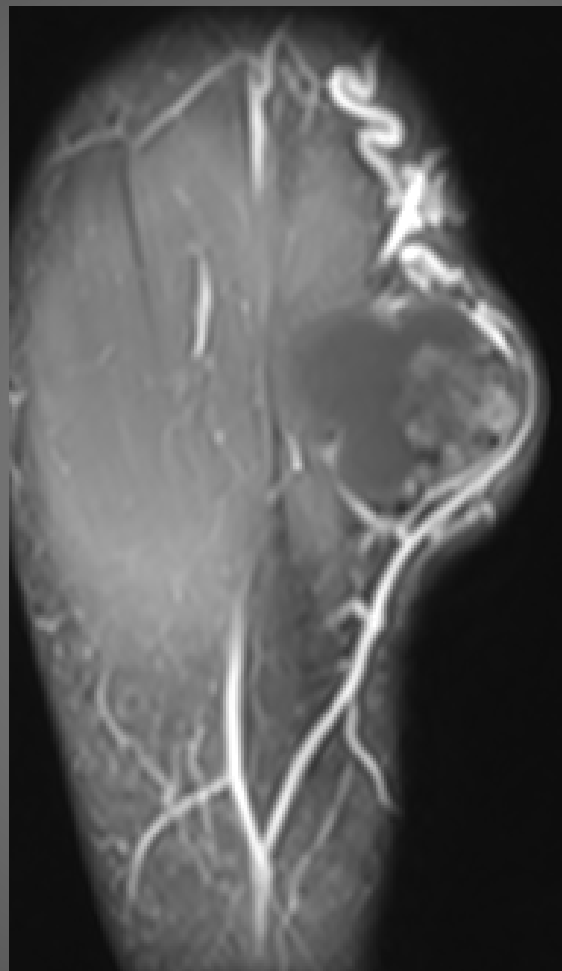




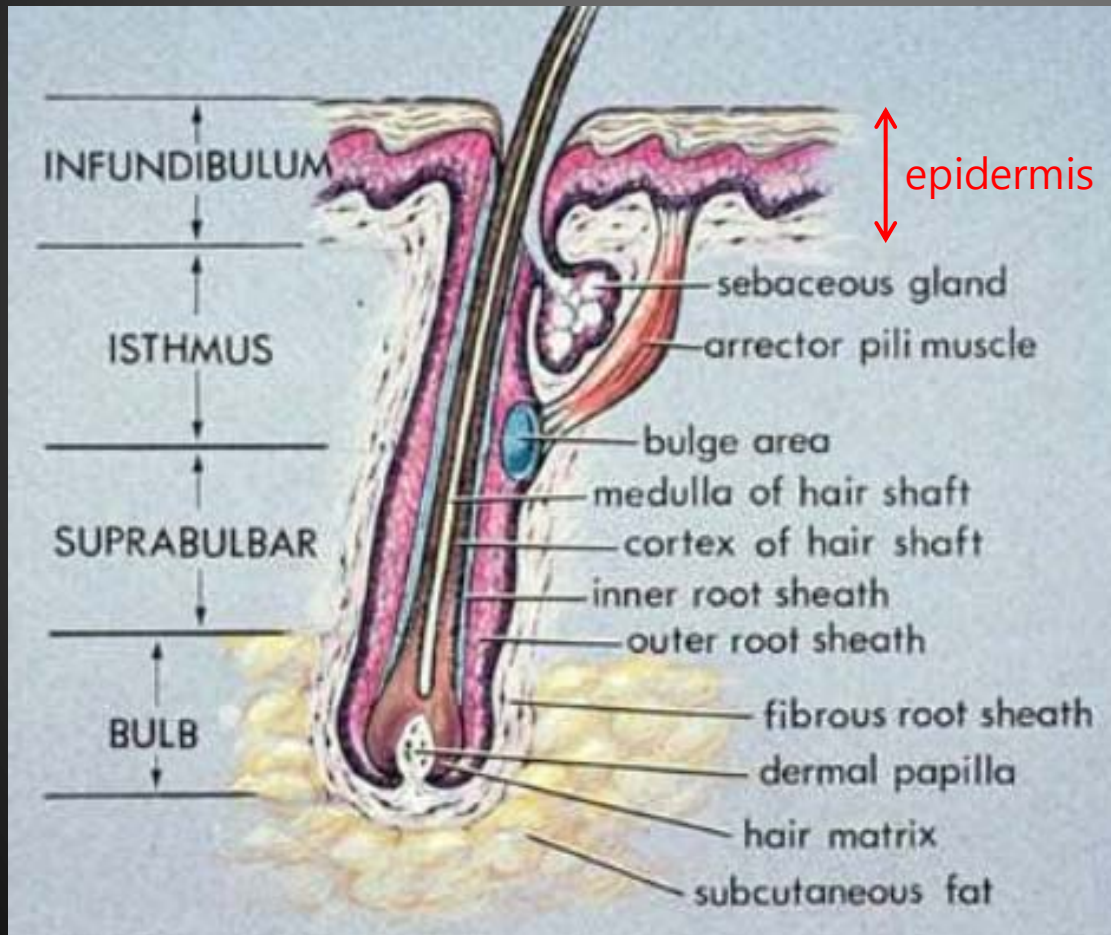






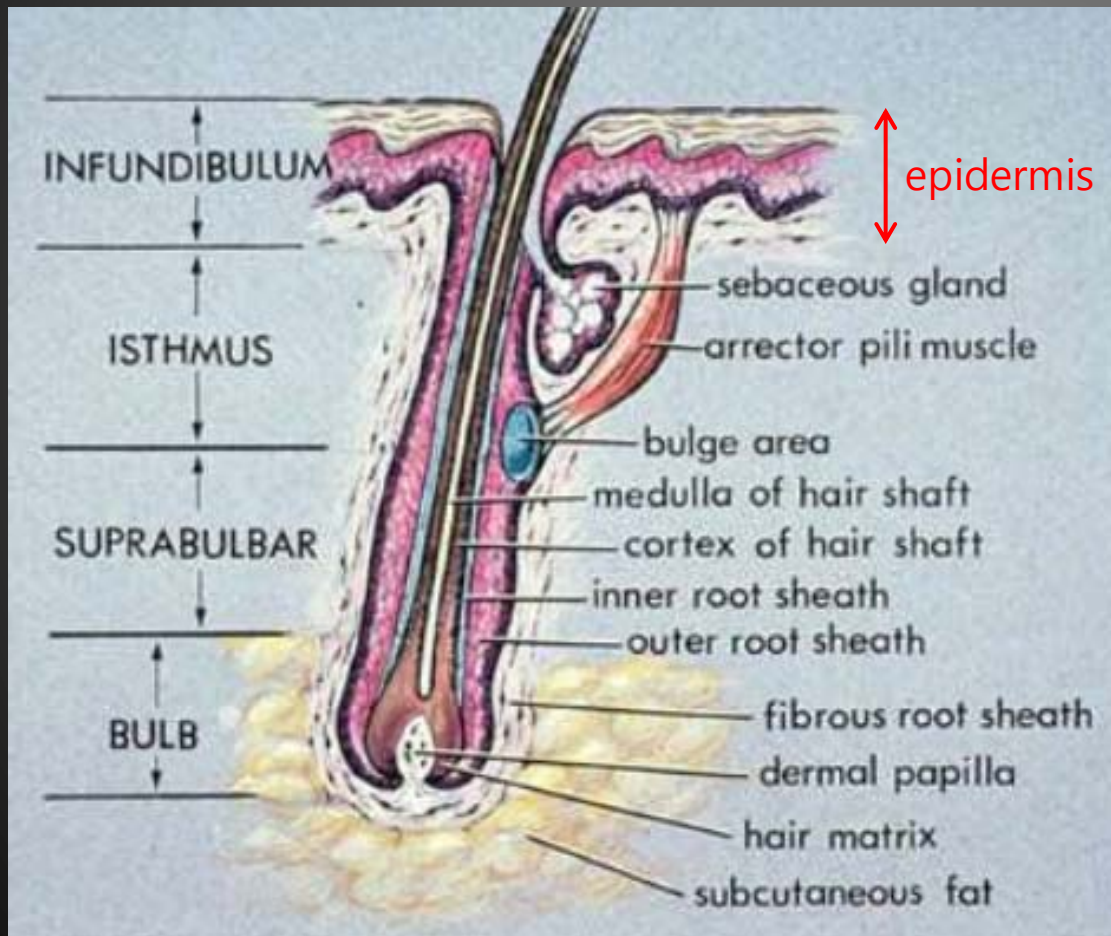


이 Superficial mass의 origin은?
Hairly skin의 그림에서 고르시오

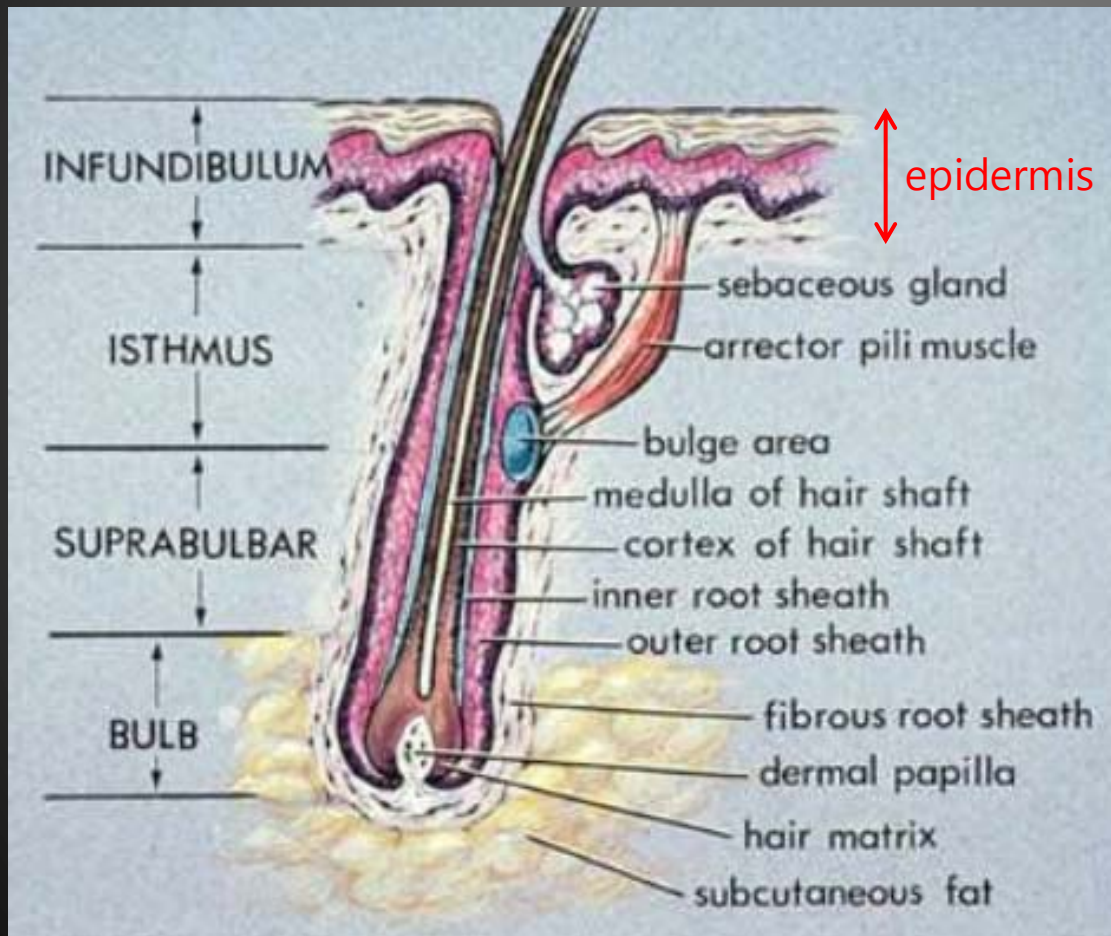


1. Infundibulum
2. Sebaceous gland
3. Outer root sheath
4. Hair matrix

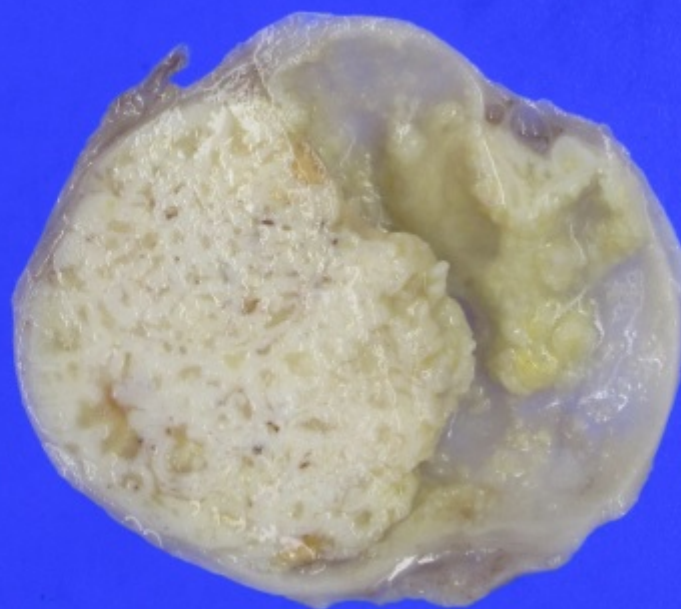
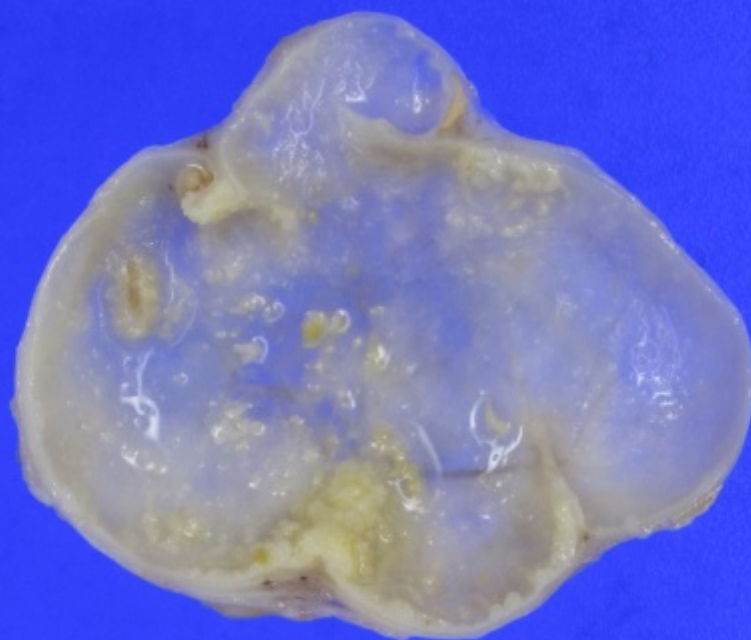
이 Superficial mass의 origin은?
Hairly skin의 그림에서 고르시오

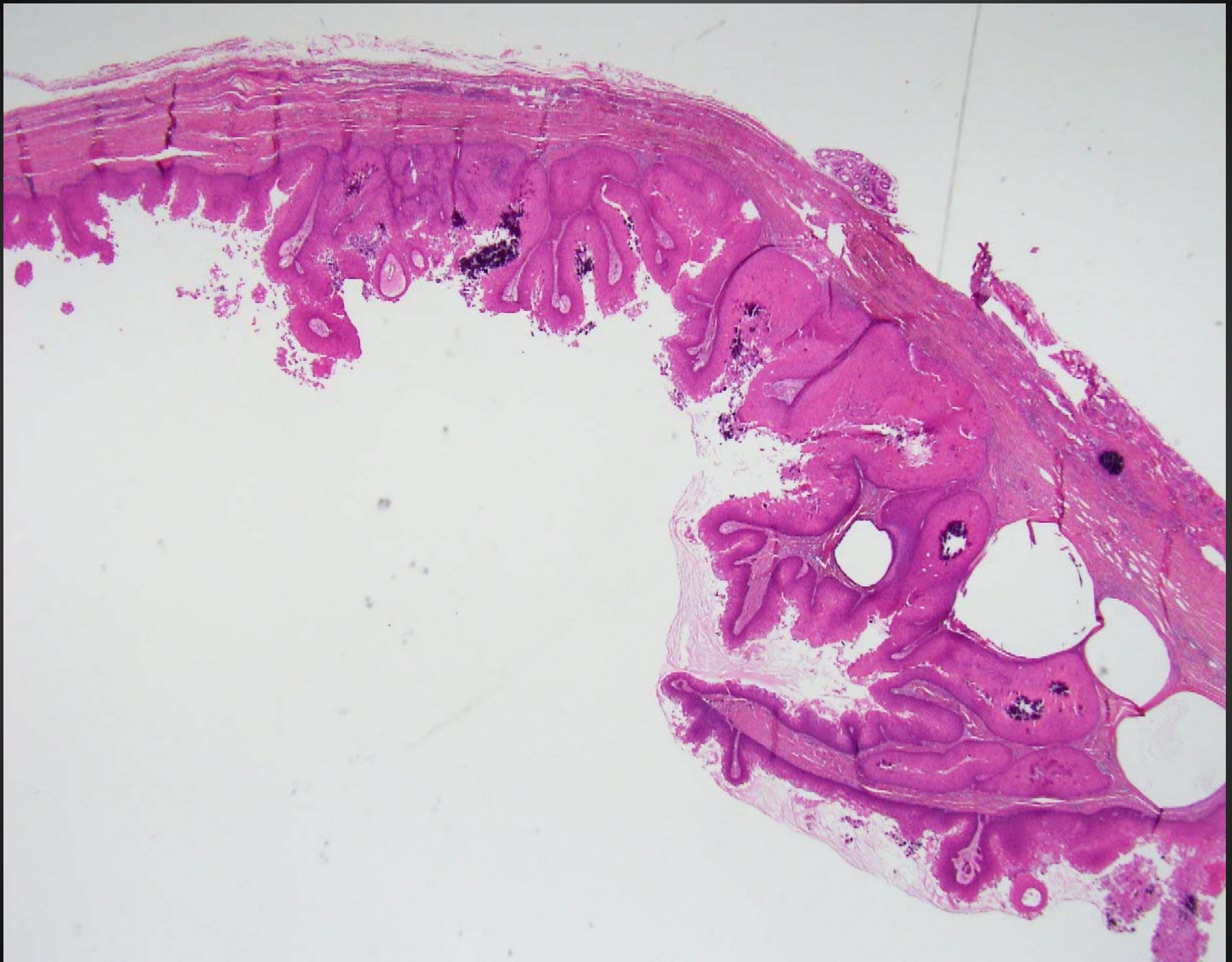


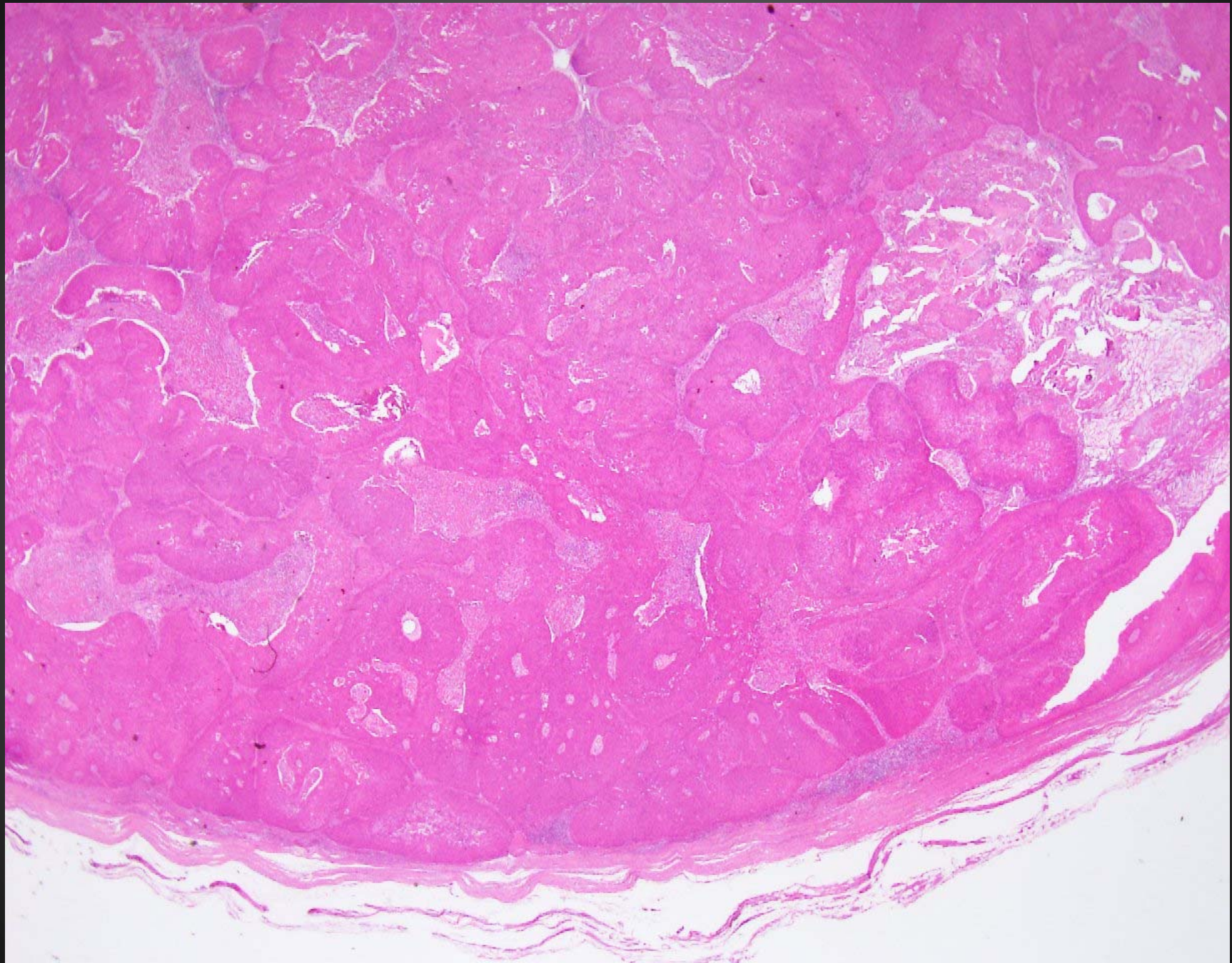
1. Infundibulum
2. Sebaceous gland
3. Outer root sheath
4. Hair matrix

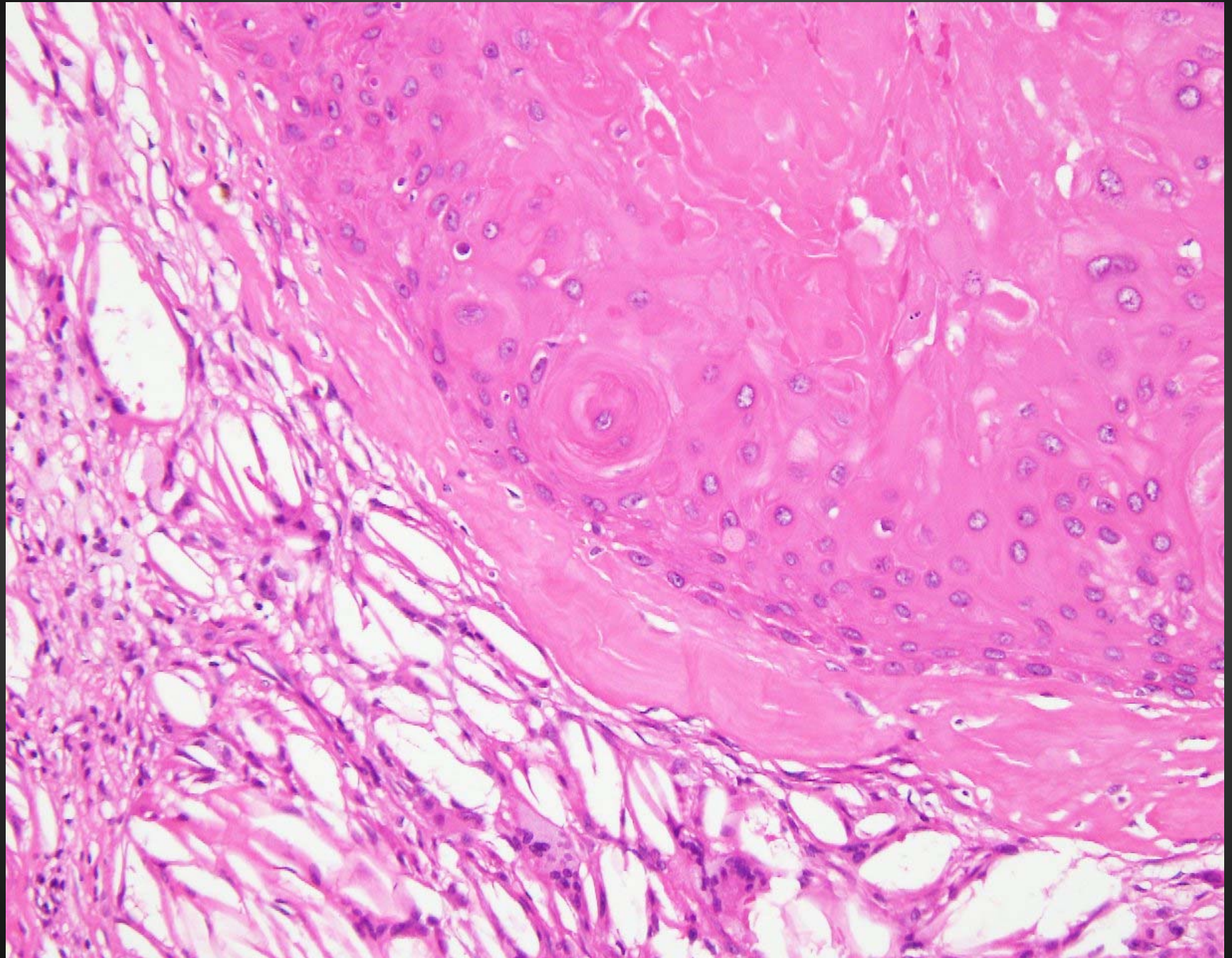


1. Infundibulum
Epidermal cyst
2. Sebaceous gland
Sebaceous cyst
3. Outer root sheath
4. Hair matrix
Pilomatrixoma









Proliferating Trichilemmal Tumor with coexistent trichilemmal cyst

- Outer sheath of hair follicle
- Proliferating lobules of squamous epithelium with multiple areas of trichilemmal keratinization
- Potential for malignant transformation
- Common recurrence
- Scalp : most common site
- Infiltrating nature through the surrounding structure
- Areas of necrosis, calcification, and hyalinization

